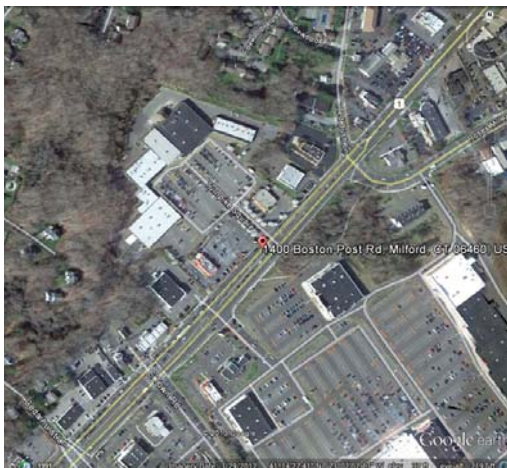


Turnpike Square

Boston Post Road, Milford, CT 06460



FEATURED TENANTS



Available Space

1,200 SQFT

As of 09/2018

Property Details

- Anchored by Big Lots, Michaels, Pier 1 Imports and Golden Corral
- Located on the heavily traveled Route 1 corridor; between New Haven and Bridgeport
- Easy access to I-95 and Merritt Parkway

Demographics

	3mi	5 mi	10 mi
Population	49,993	135,461	507,167
# of Households	20,412	53,897	190,187
Average Income	\$93,111	\$82,691	\$77,667



CALL TODAY 973-966-2800
Fidelity Properties, LLC • www.fidelityland.com



641 Shunpike Rd. • Chatham, NJ 07928

Tel 973.966.2800 • Fax 973.966.6161

Licensed Real Estate Broker



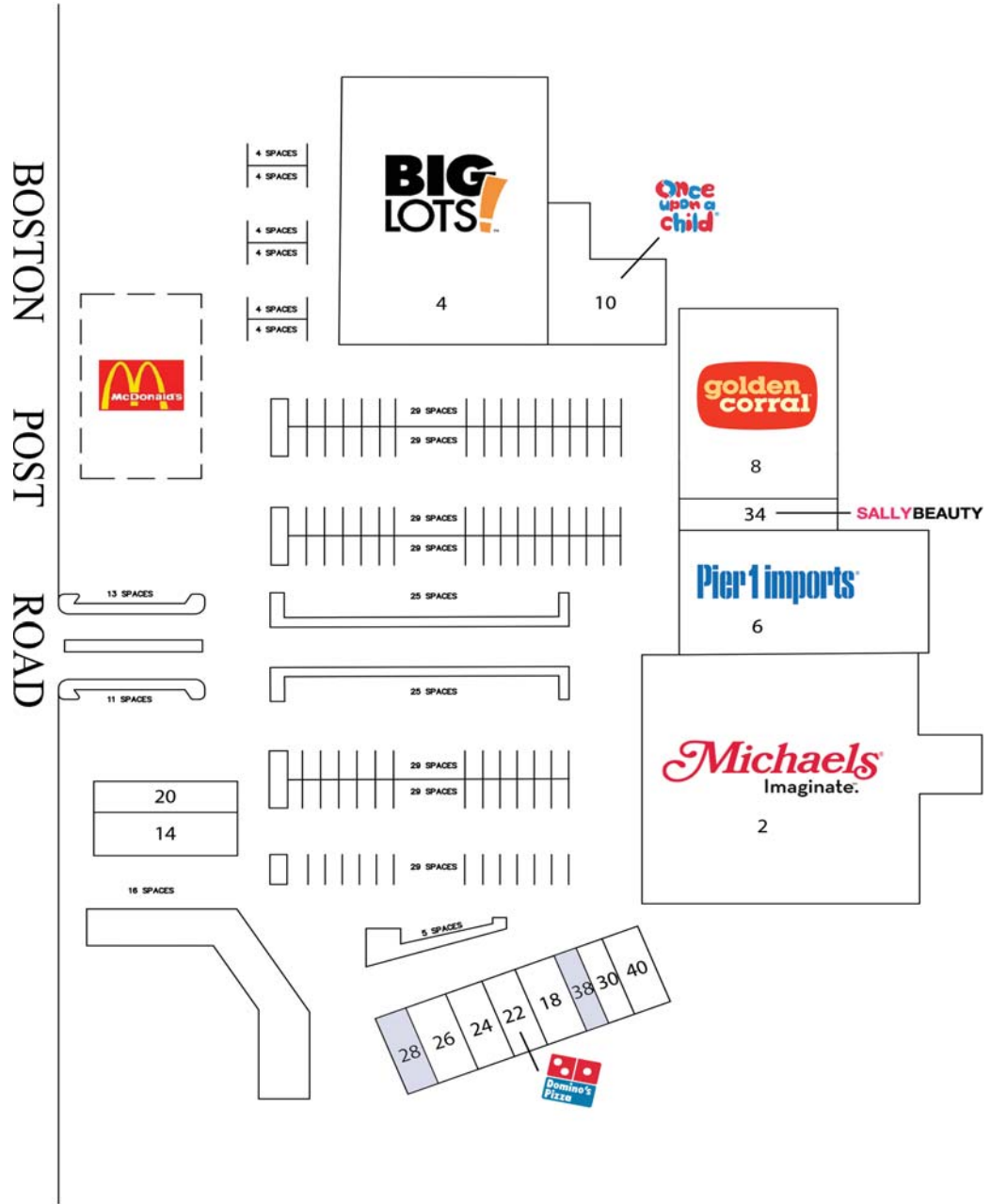


Turnpike Square

Total Square Feet: 105,591 SQFT

CALL TODAY 973-966-2800

Fidelity Properties, LLC • www.fidelityland.com



Tenant List

- 2. Michaels
- 4. Big Lots
- 6. Pier 1 Imports
- 8. Golden Corral
- 10. Once Upon a Child
- 14. Sikorsky Credit Union
- 18. Authentic Smiles
- 20. Sushiten
- 22. Domino's Pizza
- 24. Sasa Nails
- 26. Doctor's Eye Center
- 28. **VACANT** 1,200 SQFT
- 30. Trixie's Cuts for Kids
- 34. Sally Beauty
- 38. **VACANT** 1,200 SQFT
- 40. Lotus Spa

As of 09/2018

