



# Watchung Square Mall

1515 Route 22, Watchung NJ 07069

CALL TODAY 973-966-2800

Fidelity Properties, LLC • [www.fidelityland.com](http://www.fidelityland.com)



## Available Space

9,855 SQFT

16,045 SQFT

20,020 SQFT

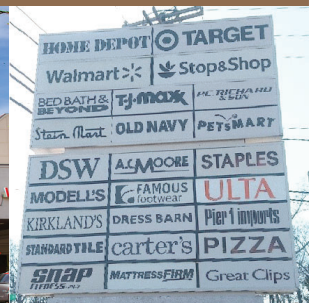
30,333 SQFT

Up to 45,920 SQFT

As of 11/2020



FEATURED  
TENANTS



641 Shunpike Rd. • Chatham, NJ 07928

Tel 973.966.2800 • Fax 973.966.6161

Licensed Real Estate Broker

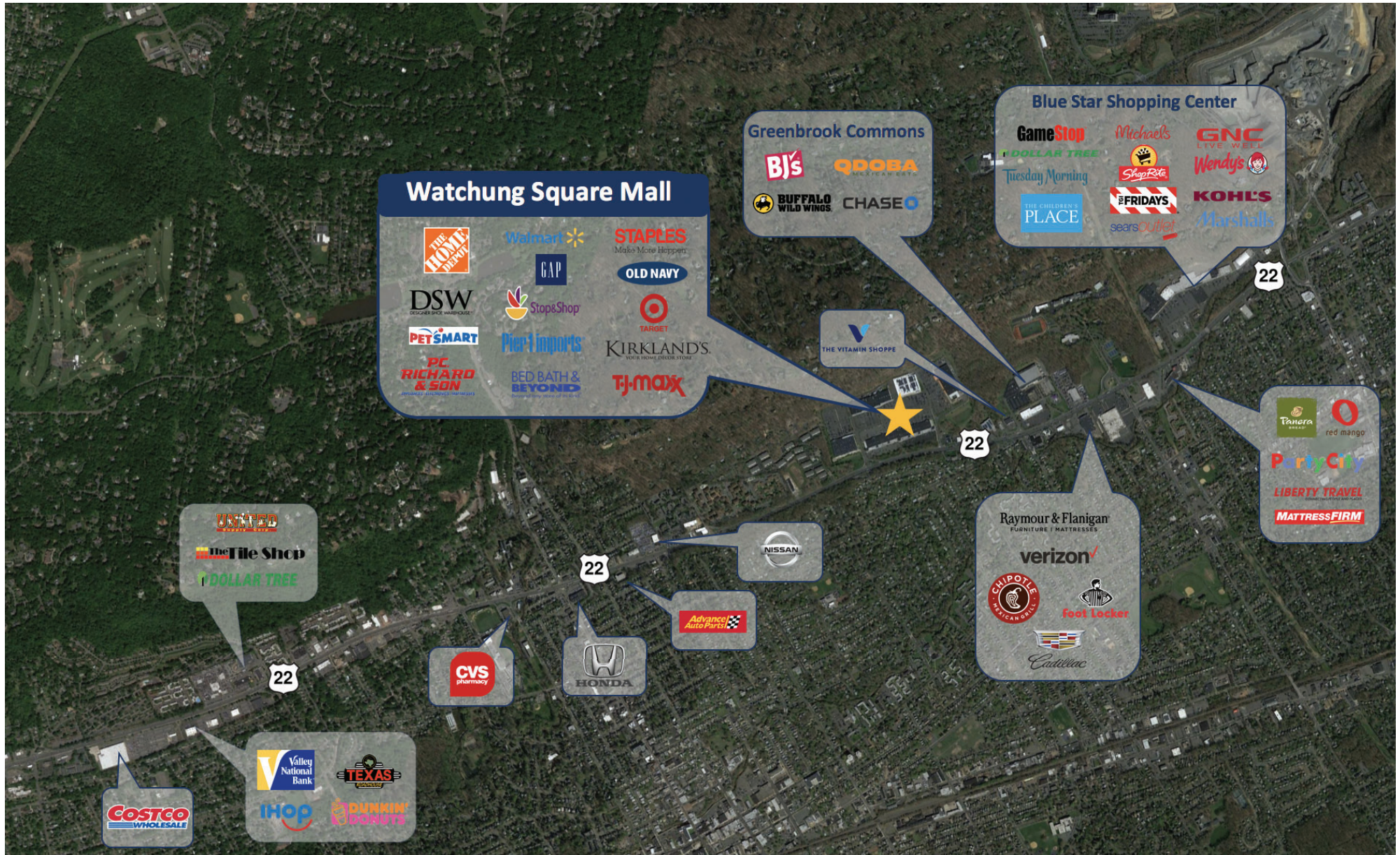




# Watchung Square Mall

1515 Route 22, Watchung NJ 07069

CALL TODAY 973-966-2800  
Fidelity Properties, LLC • [www.fidelityland.com](http://www.fidelityland.com)







# Watchung Square Mall

1515 Route 22, Watchung NJ 07069

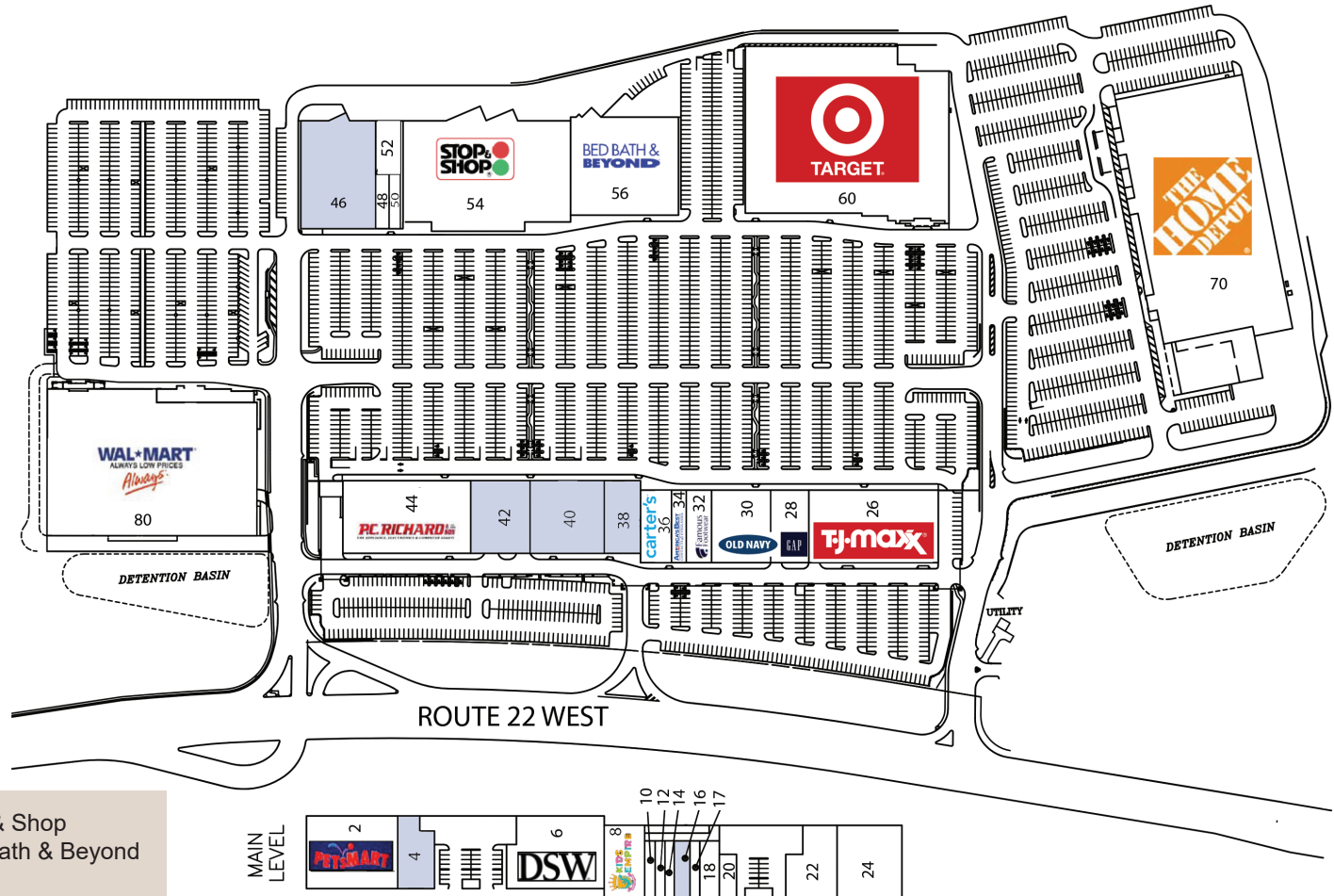
CALL TODAY 973-966-2800

Fidelity Properties, LLC • [www.fidelityland.com](http://www.fidelityland.com)

## Tenant List

2. PetSmart
4. VACANT 9,080 SQFT
6. DSW
8. Kids Empire  
(Opening Q1 '2021)
10. Nails Beauty Spa
12. Better than Philly  
Cheese Steaks
14. Foot Reflexology
16. VACANT 4,800 SQFT
17. Gamestop
18. Standard Tile
20. Mattress Firm
22. Kirkland's
24. Staples
26. TJ Maxx
28. Gap
30. Old Navy
32. Famous Footwear
34. Amercias Best  
Eye Glasses
36. Carter's
38. VACANT 9,855 SQFT
40. VACANT 20,020 SQFT
42. VACANT 16,047 SQFT
44. PC Richard
46. VACANT 30,333 SQFT
48. Great Clips
50. Paisano's Pizza

54. Stop & Shop
56. Bed Bath & Beyond
60. Target
70. Home Depot
80. Walmart



## Property Details

- Regional Power Center featuring Walmart, Home Depot, Target, Stop & Shop, Bed Bath & Beyond, TJ Maxx, DSW Shoes, Staples, and more
- Located on the heavily traveled Route 22 East / West corridor
- Signalized access for traffic both east and westbound

## Demographics

	3mi	5 mi	10 mi
Population	112,852	246,237	949,369
# of Households	37,035	83,631	333,196
Average Income	\$104,911	\$125,904	\$116,414

