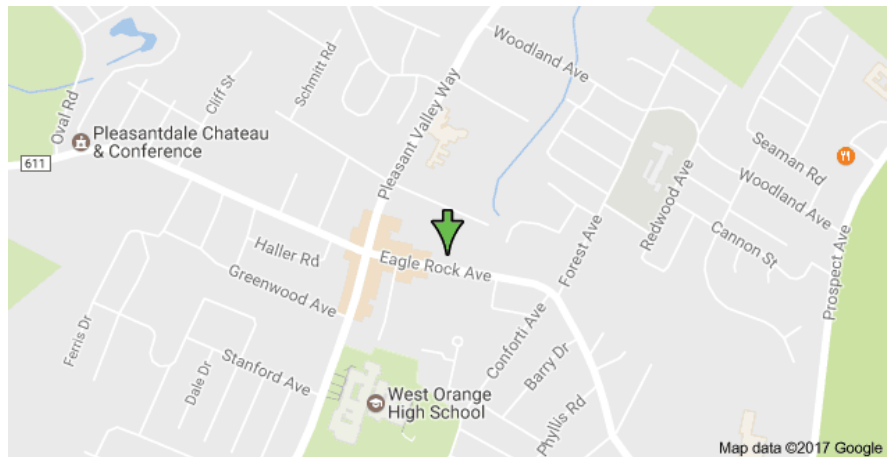
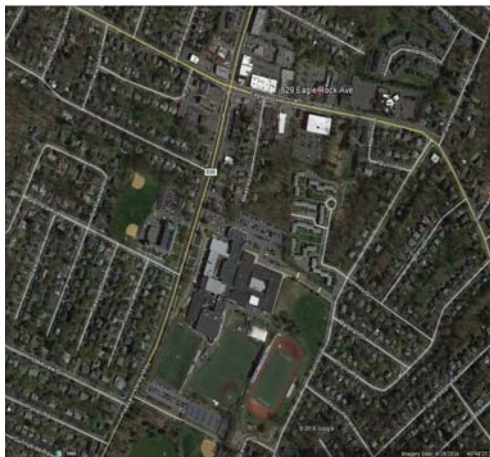


# West Orange

629-637 Eagle Rock Avenue, West Orange NJ



FEATURED  
TENANTS



## Available Space

Former CVS  
8,450 SQFT

As of 05/2017

## Property Details

- Free Standing building sharing a parking lot with Valley National Bank
- Located between Pleasant Valley Way and Prospect Avenue
- 50 Parking Spaces

## Demographics

	1mi	3 mi	5 mi
Population	10,309	127,945	401,615
# of Households	3,537	48,320	153,717
Average Income	\$154,565	\$126,711	\$108,247



**CALL TODAY 973-966-2800**  
Fidelity Properties, LLC • [www.fidelityland.com](http://www.fidelityland.com)



641 Shunpike Rd. • Chatham, NJ 07928

Tel 973.966.2800 • Fax 973.966.6161

Licensed Real Estate Broker



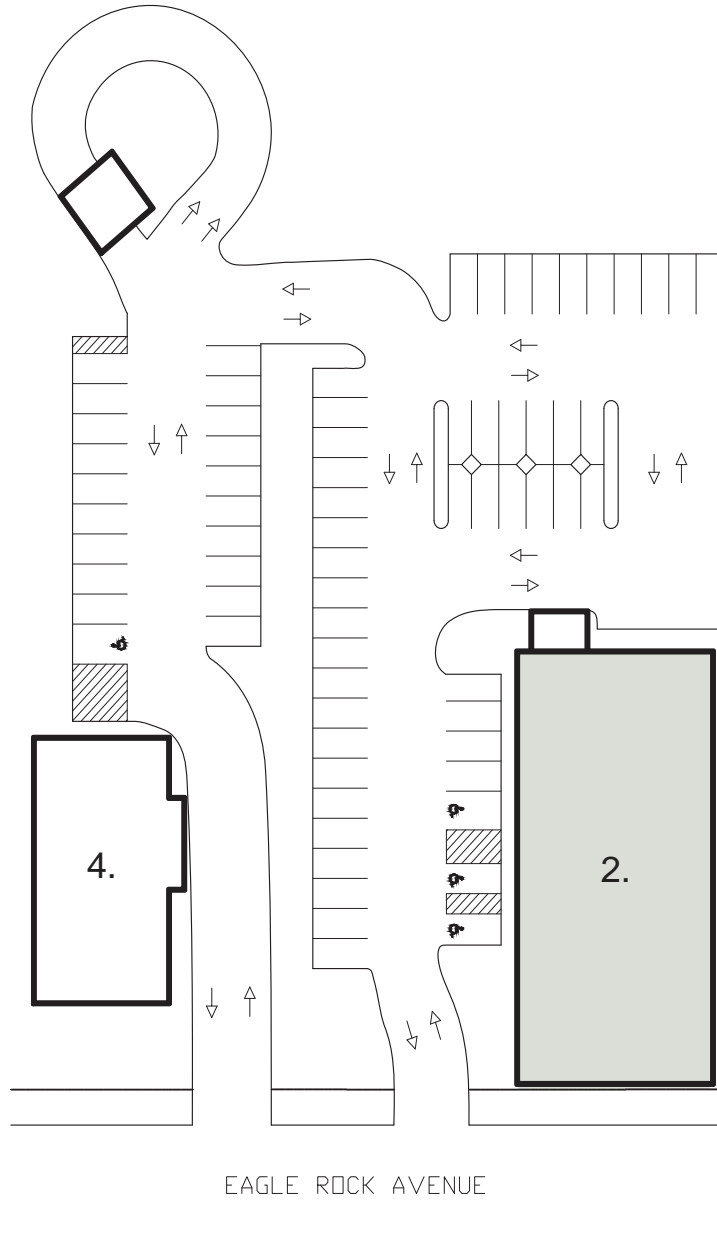


West Orange

Total Square Feet: 12,220 SQFT

**CALL TODAY 973-966-2800**

Fidelity Properties, LLC • [www.fidelityland.com](http://www.fidelityland.com)



**Tenant List**

- 2. Former CVS  
Available 8,450 SQFT
- 4. Valley National Bank

As of 07/2016



641 Shunpike Rd. • Chatham, NJ 07928

Tel 973.966.2800 • Fax 973.966.6161

Licensed Real Estate Broker

